



ASWF Contribution Proposal

February 18th, 2026



Open MoonRay

Jon Lanz

Shading Tech Lead
MoonRay TSC Chair

Matthew Low

DWA TAC Rep
DPEL TSC Chair

Jeff Mahovsky

Rendering Tech Lead

Randy Packer

Senior Manager
Production Software

Agenda

- **MoonRay**

Overview, features, history

- **Open Source**

Current status, resources, structure, architecture

- **Demos**

Parallel architecture, multi-machine, multi-context, Apple, Windows

- **ASWF Alignment**

Renderer landscape, projects ecosystem, member engagement

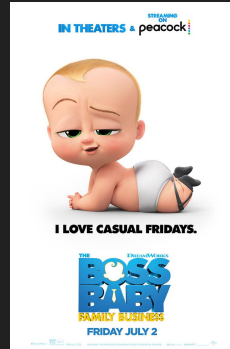
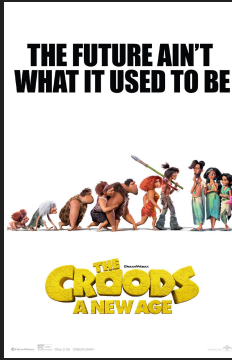


MoonRay Overview

- **MoonRay** High-end production path tracer
- **MoonShine** Collection of layerable production shaders
- **Arras** Cloud computation framework for local and distributed rendering
- **Multi-Platform** Linux, MacOS, Windows
- **OpenUSD & Hydra** Pipeline & Render Delegate
- **Utilities** Supporting tools, e.g. testing, profiling, debugging, development etc

MoonRay in Production

Latest Release!



MOONRAY

© DreamWorks Animation LLC. All Rights Reserved.



DREAMWORKS

MoonRay Overview: Modern Technology

- Bundled architecture
- Scalar, vector and XPU modes
- Uniform and adaptive sampling
- Render profiling viewer
- Hydra render delegate
- Interactive GUI
- Deep Cryptomatte support
- NUMA architecture optimization
- Checkpoint & resume rendering
- Denoising
- MaterialX (in progress)
- Light Path Visualization
- Regression test suite (RATS)
- Indexed documentation website

MoonRay History

- Proof of concept of bundled, vectorized architecture in 2014
- Initially built for Rendering as a Service
- Deployed to How To Train Your Dragon: The Hidden World in 2018
- Open Sourced in 2023



Agenda

✓ MoonRay

Overview, features, history

- **Open Source**

Current status, resources, structure, architecture

- **Demos**

Parallel architecture, multi-machine, multi-context, Apple, Windows

- **ASWF Alignment**

Renderer landscape, projects ecosystem, member engagement

MoonRay at DreamWorks

- Used on all feature productions
- Weekly releases
- Automated CI & Build
- Automated regression testing with performance profiling visualization
- Core team: 7 engineers
- Additional contributors: 6 engineers



MoonRay in the Community

Community Contributions

- MacOS / Metal build
- Native Windows port
- WSL support (in progress)
- Snap installer
- Support for various distros
(ArchLinux, Debian, etc.)

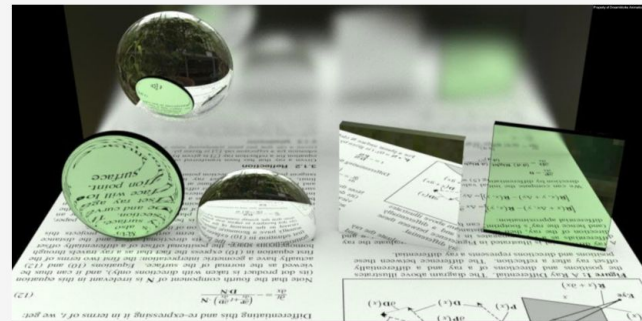
Used by

- Production partners
- Compiler vendor
- Hardware vendor
- Academic projects

MoonRay Open Source Project

- Apache 2.0
- CLA and DCO
- C++, ISPC, Lua, Python, CMake
- GitHub and documentation website
- Super Project w/ 19 submodule repos (4.5k ★)
- Releases weekly internally, quarterly publicly
 - In progress to match cadence with testing & automation
- Project Governance modeled on ASWF template
- OpenSSF Best Practices: “Passing” in-progress
 - <https://www.bestpractices.dev/en/projects/9998/passing>

MoonRay Documentation Home



Welcome to the MoonRay Production Renderer documentation site!

MoonRay is DreamWorks Animation's in-house 3D renderer, used to render all DreamWorks movies since *How To Train Your Dragon: The Hidden World*.

DreamWorks has released MoonRay as open source, under the Apache 2.0 license. The release features

- the MoonRay high-performance path-tracing renderer.
- many of the MoonRay plugins developed at DreamWorks.
- a Hydra plugin for MoonRay, allowing its use in Hydra-supporting applications such as Houdini and Maya.
- the Arras system, used to distribute MoonRay rendering across multiple machines.

To get started, explore the links in the navigation or click here.

<https://openmoonray.org> | <https://github.com/dreamworksanimation/openmoonray>



MoonRay Architecture

“Keep all the lanes of all the cores of all the machines busy all the time with meaningful work”

SIMD vectorization with ISPC

NUMA-aware multi-threaded implementation

XPU mode uses GPU as coprocessor

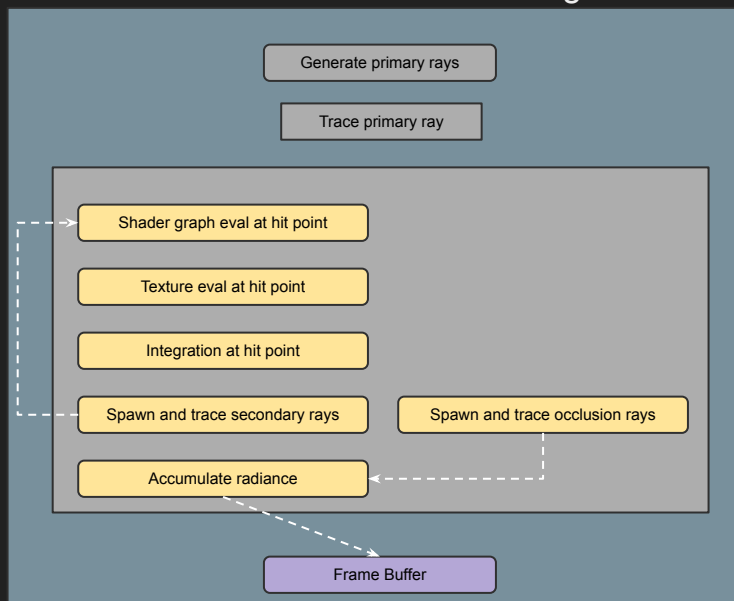
Multi-machine rendering with ARRAS



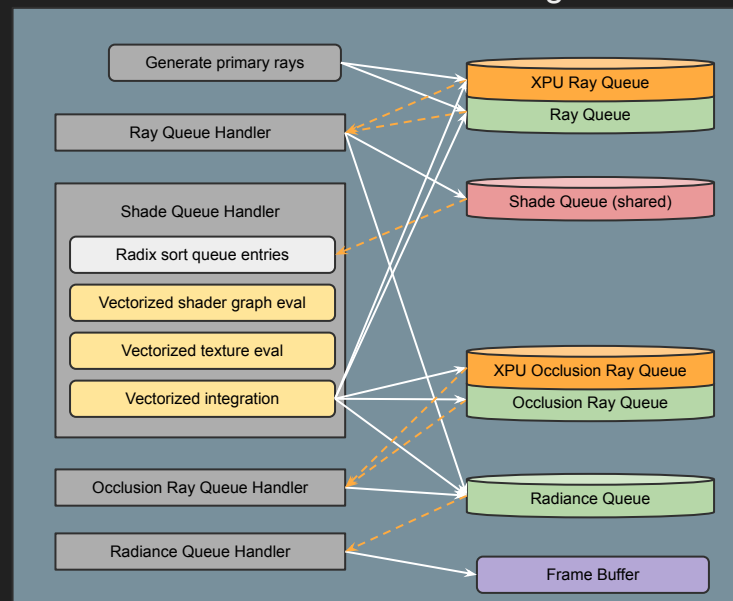
Bundled/Wavefront Architecture

Vectorization achieved using Intel's ISPC and MoonRay's wavefront architecture

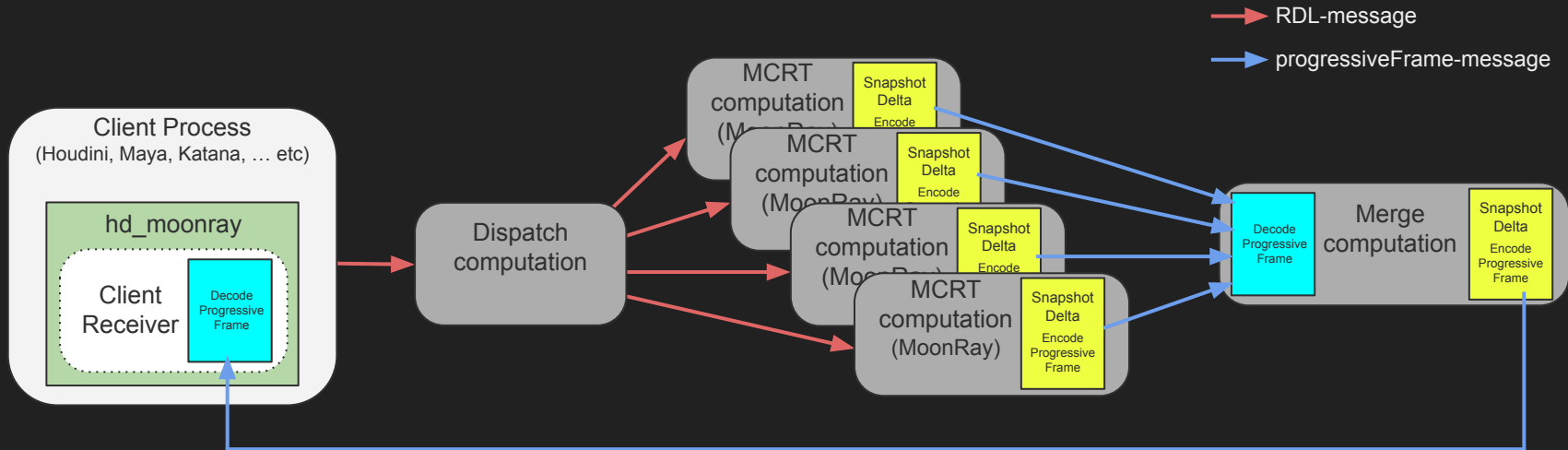
Conventional Path Tracing



Wavefront Path Tracing



ARRAS: Distributed Multi-Machine Rendering



Agenda

✓ MoonRay

Overview, features, history

✓ Open Source

Current status, resources, structure, architecture

● Demos

Parallel architecture, multi-machine, multi-context, Apple, Windows

● ASWF Alignment

Renderer landscape, projects ecosystem, member engagement



Single vs Multi-Machine Comparison



Multi-Machine with Light Path Visualization

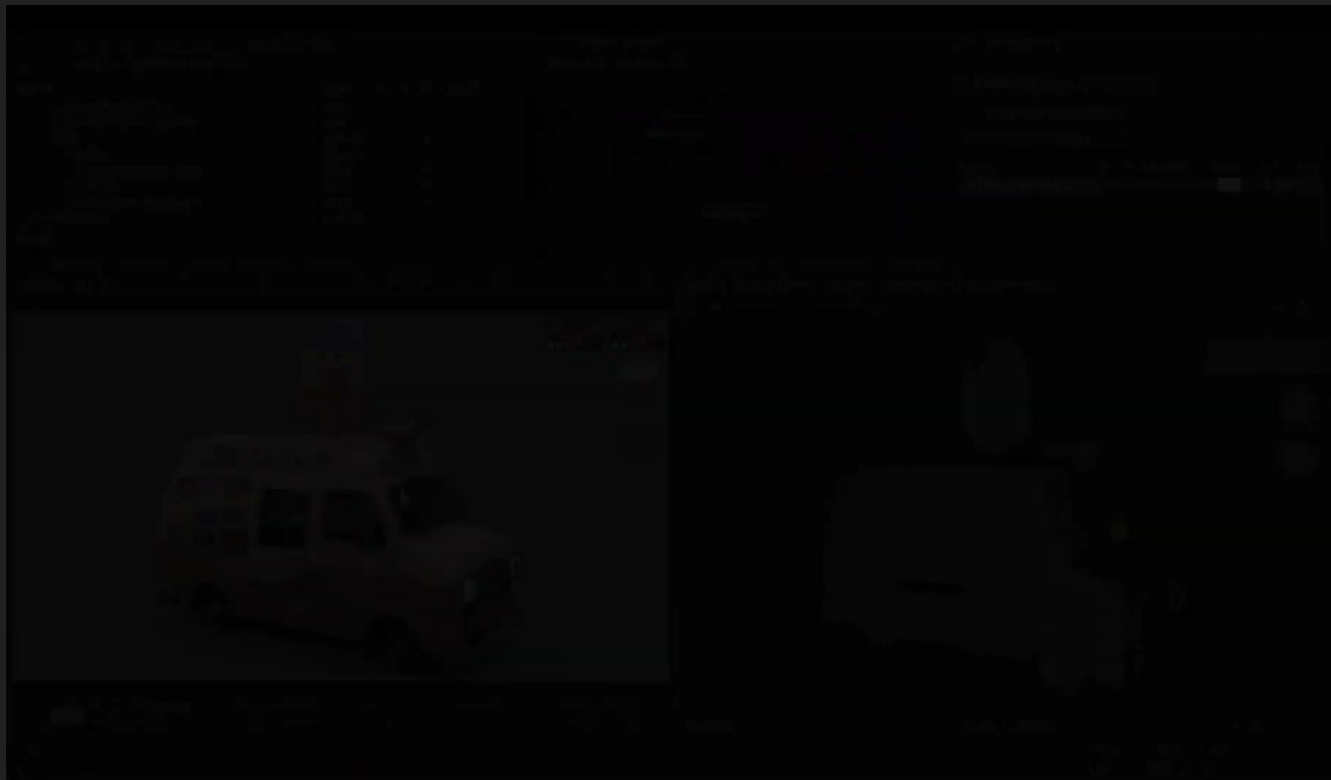
Multi Machine Path Visualizer (90 sec)

mcrt : 20 cores : 2240

ALab 2.2.0

Aug/2025

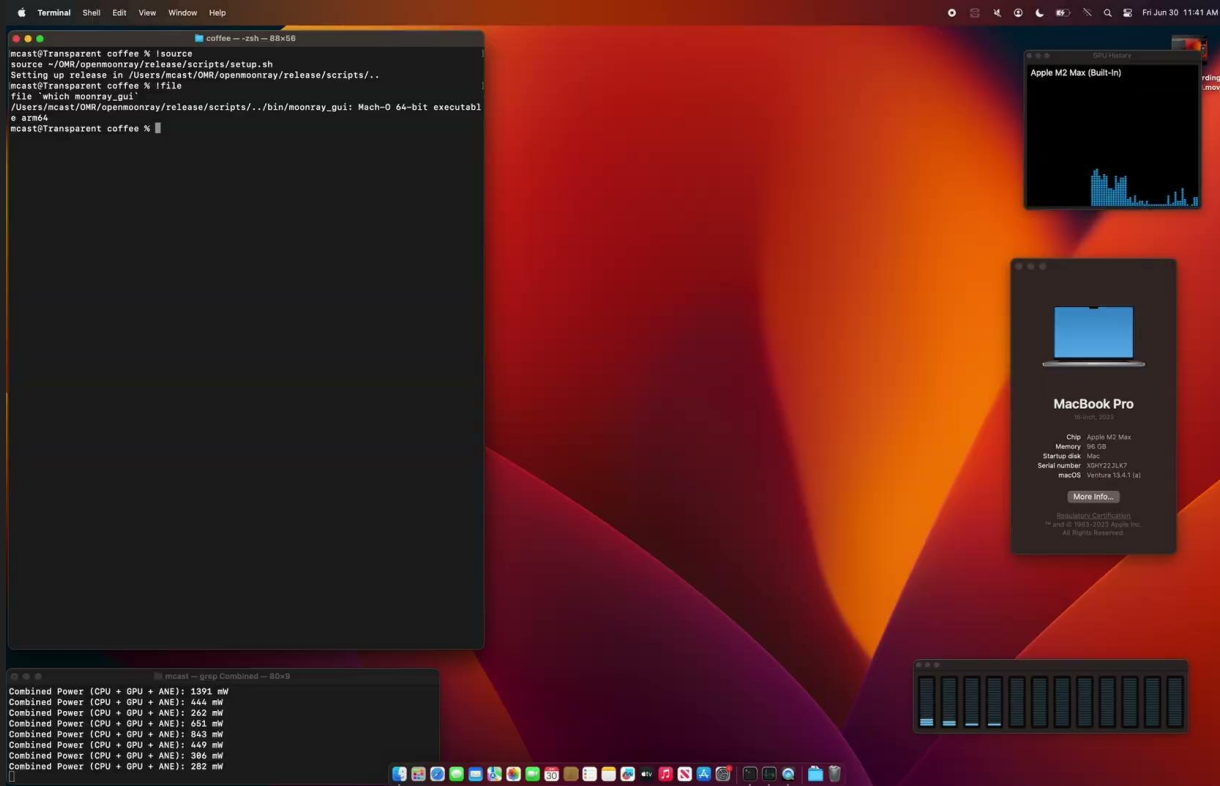
Multi-Context Distributed Rendering



Multi-Shot Distributed Rendering



Apple Silicon / Metal



Windows



Agenda

✓ MoonRay

Overview, features, history

✓ Open Source

Current status, resources, structure, architecture

✓ Demos

Parallel architecture, multi-machine, multi-context, Apple, Windows

● ASWF Alignment

Renderer landscape, projects ecosystem, member engagement



ASWF Alignment: Renderer Landscape



Arnold



Freak



Glimpse



Hyperion

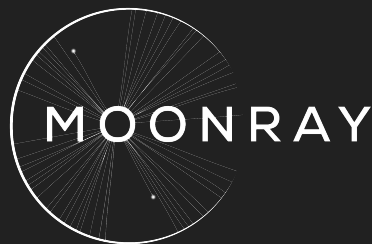


Manuka

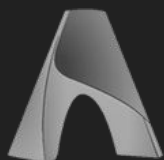


Cycles

pbrr



Mitsuba 3
PHYSICALLY BASED RENDERER



Arnold



Octane



Redshift



ASWF Alignment: Renderer Landscape

Feature
Production

Proprietary

Commercial



Arnold



Freak



Glimpse



Hyperion

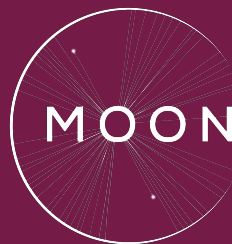


Manuka



Cycles

pbrt

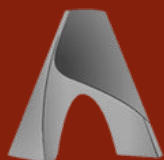


MOONRAY



Mitsuba 3

PHYSICALLY BASED RENDERER



Arnold



Octane



Redshift



Feature
Production

Open Source

ASWF Alignment: Renderer Landscape



Arnold



Freak



Glimpse



Hyperion



Manuka



Cycles

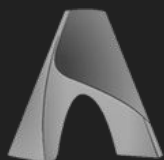
pbrt

MOONRAY



Mitsuba 3

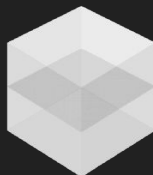
PHYSICALLY BASED RENDERER



Arnold



Octane



Redshift



Feature
Production

Open Source

ASWF Alignment: Renderer Landscape



Arnold



Freak



Glimpse



Hyperion



Manuka



Eevee*

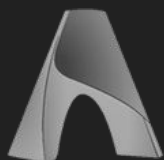
pbrt

MOONRAY



Mitsuba 3

PHYSICALLY BASED RENDERER



Arnold



Octane



Redshift



ASWF Alignment: Renderer Landscape

Feature
Production

Open Source

Proprietary

Commercial



Arnold



Freak



Glimpse



Hyperion

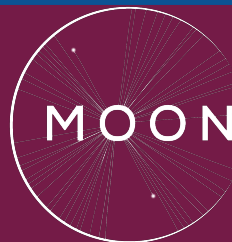


Manuka



Cycles

pbrt

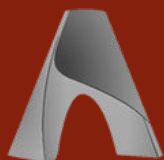


MOONRAY



Mitsuba 3

PHYSICALLY BASED RENDERER



Arnold



Octane



Redshift

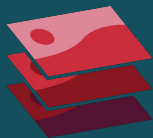


ASWF Alignment: Project Ecosystem

ACES



OpenColorIO



OpenEXR



OpenImageIO



OpenVDB



rez



MATERIALX



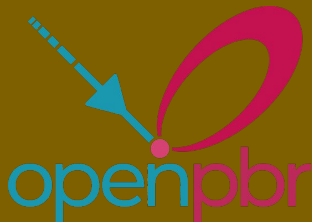
USD



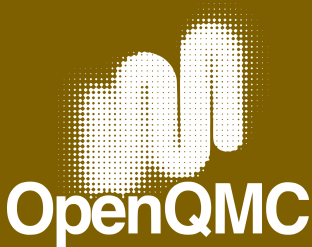
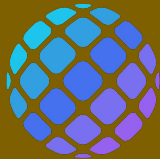
DPEL

Digital Production Example Library

Existing Integrations

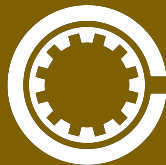


open shading language



OpenQMC

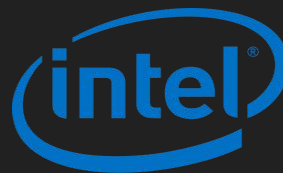
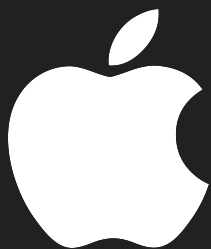
OpenPGL

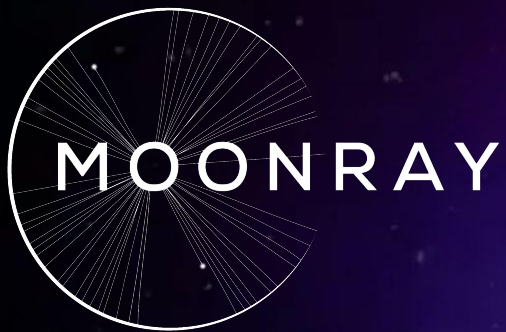


OpenCue

Opportunities

ASWF Alignment: Member Engagement





Thank You!