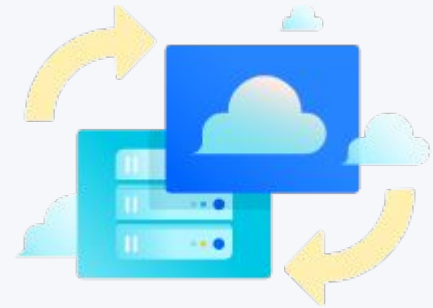


# Atlassian Cloud Migration

# Why are we doing this?

*Updated June 2024 with new business information*



# Benefits of Atlassian Cloud

- Costs reduction.
- Removal of infrastructure management.
- Easier scalability.
- Improved applications dependencies and compatibilities.
- Obtaining updates and in real time.
- Increased availability and reliability.
- Improved security.
- Increase data privacy and compliance.
- Centralized governance.
- *Ease of integrations with other SaaS platforms (e.g. Athenian)*

# Cost Reduction



- Spend less time on redundant tasks so that IT team can focus on supporting other products and internal LF initiatives.
- Offload maintenance and security tasks to Atlassian, and let the IT team focus on the more OS project related work and development.
- **Eliminate hosting costs for on-prem license models.**

# Removal of Infrastructure Management

- Managed AWS Accounts
- Network configurations
- DataBase
- Back-ups storage
- Servers

# Easier Scalability



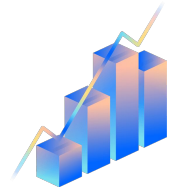
Cloud systems can scale both vertically and horizontally, just like on-prem, but because the resources (additional computing power, servers, and machines) already exist, there's no lengthy, expensive approval and scaling process.

# Improved applications dependencies and compatibilities

The Atlassian Marketplace offers nearly 4,000 apps and integrations that extend the functionality of Atlassian Cloud products. New cloud apps are frequently added to the Marketplace.

Atlassian Cloud offers more built-in features that required a custom application in the Data Center version.

# Getting Easy Updates In Real Time



Atlassian Cloud upgrades the products constantly and in real time, the products are always on the latest version available. We will have immediate access to new features, security updates, and more, without the need for any interaction or planification.

## Increased High-Availability and Reliability

99.95% uptime guaranteed for Atlassian Cloud Enterprise products with no downtime required for upgrades or maintenance.

Disaster Recovery (DR) program is focused on implementing processes, policies, and technologies that ensure critical IT systems and services are available, reliable, and can quickly be restored in the event of an outage.

# Centralized Governance



Accelerated administration with a centralized mission control center. Admins get the visibility and control needed to configure and manage Atlassian organization and sites from a single location, making administration at scale more efficient.

# Improved Security



Atlassian Cloud products will always have the latest security patches available without any interaction required. Any Security vulnerability discovered will be patched as soon as is available.

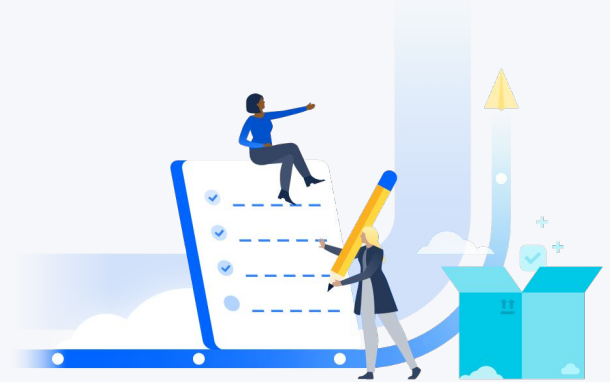
Atlassian provides a resilient infrastructure. With controls that allow us to meet security obligations and recover if there are incidents.

## Data privacy and compliance

Cloud products are built and designed in accordance with widely accepted standards and certifications. These standards mirror data privacy law requirements and give a transparent framework by which to measure the software development and data management practices.



# Objectives and Plan



# Q3 2024

- Internal LF JIRA and Confluence have been migrated (June 26)
- Q3 - All OSS projects need to be migrated
- Next steps after this presentation:
  - New Atlassian sites are created
  - Ensure Open Source License for granted for Jira and/or Confluence
  - Perform a test migration to catch any issues
  - Schedule the migration

# Atlassian Jira Standard tier features

- More information as presented in <https://www.atlassian.com/software/jira/pricing>
  - (Standard tier)
- User limit per site: ~~50,000~~ 20,000
- Same site hosts Jira + Confluence

# FAQ

- **What is the reason for the move?**
  - The LF IT team will be migrating Atlassian Jira & Confluence environments to Atlassian Cloud - shifting away from Data Center; and into a more robust environment for our users and projects.
  - The LF IT team will only be migrating Jira Software Projects, and will not be migrating any Confluence spaces that are a public, linked Knowledge Base for a JSM project.
- **Who do I contact if I have further questions, comments or concerns?**
  - For all questions, comments, concerns please contact <https://support.linuxfoundation.org/>
- **Can I login to the Cloud site using my LFID account?**
  - The Cloud site won't be linked to your LFID account, each user will receive an invitation to their email address to join the site.
- **How would I login?**
  - The users can login at [atlassian.com](https://atlassian.com) with their email address.
- **What can I do if I can't login to the Cloud?**
  - Contact your administrators or maintainers to invite your account to the site.
  - Create ticket at <https://support.linuxfoundation.org/>
- **What is the cost for the projects?**
  - There is no cost to the projects. In fact, there will be hosting costs savings after switching from Data Center to Cloud.
- **What would change in this migration?**
  - More robust security measures.
  - Continuous performance improvements and site reliability.
  - Better collaboration among projects, team members and departments.

# FAQ

- **What would be the new URL?**
  - The Jira Link: <https://lf-<project>.atlassian.net>.
  - The Confluence/Wiki Link: <https://lf-<project>.atlassian.net/wiki/home>.
- **Will the Cloud site keep our wiki.domain or jira.domain?**
  - Using a custom domain like wiki.domain or jira.domain is only available for paid customers, open source license will use these URLs as a redirect only, and will keep "lf-<project>.[atlassian.net](https://lf-<project>.atlassian.net)" as the domain.
- **Can I change my Atlassian Cloud URL?**
  - Only paid tiers have the ability to switch or add more Atlassian URLs and long as they aren't in use. Free and Open Source License tiers won't have the ability to change the URL.
- **Can my current Jira or Confluence apps be used in the Cloud?**
  - Not all apps are compatible with the Cloud. We will identify the apps that are compatible and migrate them, while the unavailable apps will require other available options.
- **How will the Cloud permissions work?**
  - Each Atlassian organization will have a separated permission groups between administrators, maintainers and contributors.
  - The administrators will have the access to create/update/delete groups and permissions, also to add/remove/invite users from the groups.
  - The maintainers will have the access to add/remove/invite users from the groups.
  - The contributors will have access user access to view, edit issues or pages.
- **Can I request any [atlassian.net](https://atlassian.net) site?**
  - The sites are unique in Atlassian, you are allowed to create any site as long as the name has not been created before.

# FAQ

- **How can I request a Jira Software or Confluence cloud environment?**
  - The request must go to IT Support at <https://jira.linuxfoundation.org/plugins/servlet/desk/portal/3/create/685>.
- **Can I request a Jira Software or Confluence in PCC?**
  - No, PCC Collaboration Wiki section will only keep the record of the Atlassian site and its status. The request must go to IT Support at <https://jira.linuxfoundation.org/plugins/servlet/desk/portal/3/create/685>.
- **Where can I find Jira Software and Confluence tier differences in Atlassian?**
  - You can access Atlassian website to find the tier and price differences follow the links for [Jira Software](#) and [Confluence](#).
- **Can we change the name of our new URL?**
  - Yes, we can change it up to 3 times max.

Thank You